

APRIL 2022

The Little Chapel with the Big Heart



Dear Members of Little Chapel,

I am grateful for your Elders and Deacons who devoted this past Saturday to a day of planning. Twenty of us gathered to begin the process of preparing a vision for Little Chapel which will provide

direction for the future and will have a bearing on your next called pastor. The process recognizes the need for a clear and compelling vision which is articulated well to all members. It involves asking *"What is going on here and what does God have to do with the future of Little Chapel?"* The process involves prayer, study and time as it slowly emerges.

On Saturday we began the work by asking:

"What's going well?" "What are the central core values which hold Little Chapel together?" "What are the perceived strengths at Little Chapel?" Derived from conversations with members, congregational surveys and shared table talk the word *"family"* was used over and over again as the dominate core value of Little Chapel. A second determined core value was *"worship"*. Worship having to do with music, preaching, and the beach service. A third core value had to do with *"mission"*. These three core values become gold in casting a vision. If these three values are lost, we lose ourselves and our community story and history.

Now leadership is able to take those strengths/values and integrate them into a picture for the future. However, your church leaders are well aware that a clear compelling vision will also seek to identify a specific direction for ministry. *"Family, Worship and Mission"* for whom and with whom? In a post-pandemic era, every

church is rethinking its purpose. How will an empty church be used? How will our resources (physical and financial) be used to further our vision? Perhaps the most pressing question; *"Will Little Chapel focus our efforts to grow a church of older adults, a church of young families or a hybrid model existing somewhere in-between?"* All three exist as possibilities and all three are grounded in Biblical models. One model is conserving (*"The People of God"*). Another is expending (*"The Kingdom of God"*). A third somewhere in-between.



Also taken into consideration was looking at how the demographics are changing within our surrounding area. For instance, Wrightsville Beach is significantly increasing in the number of rental properties for

vacationers while the number of retirees, seeking a place of belonging and *"rootedness"*, is increasing within a three-mile radius of Little Chapel. And while not specifically related to demographics, leaders found it most interesting that many residing at Wrightsville Beach had little idea as to the specific location of Little Chapel! Is Little Chapel on the Boardwalk one of the great silent treasures which exist on Wrightsville Beach?

In addition to the scope of information shared above there were also those *"ripe"* or urgent issues shared by the larger membership. While the word *"growth"* was mentioned numerous times by members, the word was thought to be synonymous with *"energy"*. Spiritual energy, congregational vitality!

The afternoon concluded with work yet to be done.

(Continued on next page)

In the next thirty days each small group will gather and bring clarity to a vision concerning future direction. Each group will also consider the wisdom of author Thom S. Rainer and his suggestions to churches living in a post-pandemic era. The contribution of each group will enable leadership as a whole to embrace God's will and ultimately to develop actions plans. In other words, remain posted for what is yet to come. Above all, continue to pray for your church leadership.

The formation of the **COLLEGE OF ELDERS**. The College of Elders would consist of *all* ordained Elders at Little Chapel and would meet occasionally for the purpose of informing the larger core of leadership regarding directions and decisions of the Session. The first gathering of the College will be **Sunday, April 24, at 9:30 in Room 201.**

Blessings, Pastor John



Eight Deacons met with Pastor John March 20th after worship to discuss accomplishments, challenges, and needs. These meetings establish continuity among the committees allowing a more efficient teamwork concept. As the pandemic eases, there are exciting things in the works you'll hear about later. The Stewardship Committee would love more members. The Membership Committee introduced four new members March 27th and are working on the rolls. Congregational Care are hard at work. Communications continues to keep the congregation informed via the newsletter, livestream, and website. God is good!



Session Minutes March Meeting

Your Session met Monday, March 21, at 6 p.m. in the upstairs classroom.

We will all have the opportunity to welcome four new members in March – Duncan McIver, Trudy Morehead, and Ellen and Philip Pearsall. Be sure to wear your name tags for the next month or two, and introduce yourself to these new members of the Little Chapel family.

If you see a law enforcement officer in the parking lot or narthex of the church during worship, don't be alarmed – be grateful! We are inviting them to keep an eye on things for us again. They may not be here every Sunday, but let's make them feel welcome when they are with us.

The Easter Egg hunt returns in a new format for this spring. Watch for details in the bulletin and in this newsletter on how you can help make this a fun event for our children.

Tiny homes will soon start appearing at Eden Village (one of them is being sponsored by LCOB). New residents will move in around Christmas time, and you will be invited to serve on a committee to help mentor the person in "our" house. Soft goods like paper towels and other consumables will be sought to supply the home for the new resident. Details will be posted on the kiosk and in the bulletin this fall.

Communion will be served in the pews beginning on Maundy Thursday, but the individual packaged elements will continue to be used.

Two workdays are being planned for us to help spruce up the grounds and get our property ready for Spring.

The first one is April 2, and details will be in the bulletin. Come out even if you only have an hour or two, to clean up, plant, mulch, or work on indoor tasks. No special skills are required, and it will be a good time to enjoy working with other members of LCOB.

The Board of Deacons met on Sunday, March 20, and is preparing to organize for the coming year. Activities will be announced as they are developed. Watch the kiosk for opportunities!

Marti Shogi recently "attended" a Zoom meeting of the Presbytery of Coastal Carolina as the commissioner from Little Chapel. She reported that the attendees voted to approve and bless our relationship with our interim pastor, Rev. John Earl, and also authorized the work of our future Pastor Nominating Committee.

You will have two opportunities to honor someone on Easter Sunday, while serving a greater cause. First, you may contribute to the One Great Hour of Sharing on Easter Sunday in honor of someone you specify. All proceeds from that donation will go to support the Presbyterian Church efforts in Ukraine. Second, you may make a contribution to the Property Committee, in the name of a person you wish to honor. In turn, Property will then purchase plants for the church beautification workdays. Watch the bulletin for more information on each of these special offerings.

A Baptism will take place on Sunday, April 24, at the 10:30 service. All members are invited to welcome and bless this child as we promise support and prayer. While doing so, we will recall our own Baptisms, and the promises our parents and church made on our behalf.

Your Nominating Committee is hard at work evaluating candidates for the Pastor Nominating Committee. Once the final proposed slate is formulated, the congregation will vote at a called meeting, which is not yet scheduled. Please pray for this committee and those who may be asked to serve to choose our next pastor.

The next regular stated meeting of your Session will take place on Monday, April 18, at 6:00 p.m.

By Mary Jo Kohunsky, Clerk of Session



Matthew House- Mission Group Update

Last month we welcomed this year's first traveling mission group to the Matthew House. Twelve very enthusiastic students from Marist College in Poughkeepsie, New York participated in an Alternative Spring Break by helping to build a Habitat for Humanity house in our community. Pictures of this group at work show how these energetic and passionate students put God's love into action, while helping a family fulfill its dream of owning a new and safe home.

Spread the word about the Matthew House!

Ann and Jim Martz, amartz5@ec.rr.com



KNITTERS and CROCHETERS

We invite you to join us. We create prayer shawls and lap robes to comfort those in need. We also make hats, scarfs, mittens and blankets that we distribute to many of our local charitable organizations. Babies baptized in our church also receive a blanket.

We meet every 1st and 3rd Wednesday of the month from 9:30 to 11:30 am. Please join us in fellowship, laughter and creativity as we share our talents to warm others.

Contact Betty Gischel, bettygischel@gmail.com, with questions.





MIGRANT MINISTRY

ANNUAL MIGRANT MINISTRY

The Migrant Ministry is an important mission of Wilmington Church Women United outreach. Each year, health kits and duffel bags are assembled by member churches to be used by North Carolina's migrant workers. The health kits are given to the Telamon Corporation in Whiteville for distribution to workers in Southeastern North Carolina.

MIGRANT HEALTH KITS ARE TO CONTAIN:

**Soap, Toothpaste, Dental Floss,
Band-Aids, Safety Pins, Shampoo,
Towel, Washcloth, Hand Cream, Nail
File, Deodorant, Comb & Brush,
Plastic Soap Dish, Disposable Razor,
Toothbrush in a Container**

Place items in a duffel bag 18" x 36" made of strong material with a drawstring at the top.

Empty bags will be available in the Narthex by mid-April. **Kits should be returned to LCOB by Sunday, May 1.**

Please leave completed bags in the fellowship hall. Church Women United will take the bags to Wesley Memorial United Methodist Church to be collected by Telamon Corporation.

Thank you for your support of this Christian outreach which will provide basic health needs to the many migrant workers arriving in our area during the year.

The Presbyterian Women of Little Chapel

Mission Committee



The Mission Committee would like to remind the congregation about the One Great Hour of Sharing offering. This year,

the funds received will be directed to help our brothers and sisters in Ukraine, who are enduring terrible, unimaginable strife in their homeland, and are having to flee to neighboring countries for safety. Envelopes will be available on Palm Sunday and Easter. **This offering will be received on Easter.**



Also, please consider being a driver for Meals on Wheels. This vital mission literally depends on the "wheels" to deliver the "meals." For

so many in our community, this small but meaningful outreach can make such a difference in their day-to-day life. A home-cooked meal, a friendly face and a few minutes of warm conversation are all that is needed to brighten someone's day. **Please contact Wilson and Patty Rogers, Beckey Smith or Marti Shogi to volunteer.**



Memorial Day will soon be upon us! And with that, we will kick off the first of our three-holiday weekend **parking lot fundraisers!** This is always a fun time! There will be a need for car jockeys, traffic directors, people to man the donations table and to provide lunch for the volunteers. **Sign-up sheets will be posted on the kiosk in the narthex** in the coming weeks; be on the look-out!! ☺☺

The Mission Committee is dedicated to serving and supporting those in need. We appreciate your support and prayers.
#makeityourmission

Easter Gifts Special Offering

As we look to the promise of Easter, we are provided the opportunity to remember loved ones in light of the Resurrection and to honor those who are special friends. You are provided two options this year:

1. Giving to the denominational One Great Hour of Sharing Offering as noted in the Mission Committee report this month and bulletin.
2. You may contribute to the spring planting by the Property Committee on the church grounds. They will purchase and plant azaleas, podocarpus, crepe myrtles, and jasmine.

_____ I plan on contributing to the OGHS offering.

_____ Contribute to the church plantings.

Please submit this to the church office, checks payable to Little Chapel on the Boardwalk. Checks will be accepted until April 10th. Financial gifts given in memory or in honor which are received on Easter Day will NOT be listed in the bulletin insert.

Gifts received prior to April 10th will be published in the Easter bulletin exactly as they are received. Please print.

In Memory of: _____

In Honor of: _____

Given by (name): _____

Day phone: _____

2022 April						
Sun	Mon	Tue	Wed	Thu	Fri	Sat
					1	2
3	4	5	6	7	8	9
10	11	12	13	14	15	16
17	18	19	20	21	22	23
24	25	26	27	28	29	30

2nd 9 a.m. – 1 p.m. Church spring workday

3rd 4 p.m. Beach Service Open Forum - F. Hall

6th Noon-12:30pm Lent Meditation/Music

14th 7 p.m. Maundy Thursday Tenebrae Service

15th 12 p.m. Noon Good Friday Service

17th 10:00 a.m. ONLY Easter Day Service



May 1st 8:00 a.m. Worship on the beach begins!



Sunday, April 17th Easter Day, 10:00am Worship

Adult choir with musical instrument accompanists.

Join us for a meaningful musical worship experience!

Beach Service Forum
Sunday, April 3rd, 4:00 p.m. Fellowship Hall

The beach worship service begins Sunday, May 1st. The forum will be a time of sharing and celebrating. We will discuss logistics, location, etc. Come support this special summer worship season and voice your concerns and suggestions.

Worship Committee



TURNING CHALLENGES INTO OPPORTUNITIES



By Gary Kohunsky

It was President Kennedy who suggested that out of crises can emerge new and incredible opportunities, particularly if traditional approaches and paradigms are questioned and challenged. During a crisis, incentives and motivations change, potentially leading to new cooperative behaviors and even to the creation of new systems or structures. Crises can get the collective adrenaline flowing, focusing minds to solve the problem at hand.

Around this time in March two years ago now, our Session voted to cancel worship services, Sunday School, and all church-related functions for 2 consecutive Sundays as the Covid-19 pandemic was sinking its teeth into everyone's lives. No one knew if it would wash over us like a typical flu season and be gone, or would it have more serious, long-lasting consequences?

I had previously videoed one of our Christmas Cantatas and asked Pat if he would be receptive to having a worship service recorded and posted on YouTube for those who wouldn't be at church for at least the next 2 weeks in March 2020.

I was pleased that he was receptive to the idea, but we didn't have much of a plan, just the idea. There were very few of us in the Sanctuary for that first recording on that Sunday in March two years ago.

It felt unreal to be there - the pews were empty, an uncomfortable silence replaced the familiar sounds of conversations, greetings, and laughter. My camera tripod was about 10 feet from the pulpit and Pat even remarked how preaching to a camera in an empty church was very difficult.



That first video included this message:

While our traditional worship services have been cancelled due to precautions and guidance resulting from the Covid-19 pandemic, and during our social distancing and self-quarantining period, we plan to provide video every Sunday at 9 am. We hope this short service helps us stay connected as we look for ways to worship together during this Lenten season.

The coincidence of timing is remarkable - the first video worship service was during the Lenten Season 2 years ago.



That first video has been viewed 361 times since it was first posted March 22, 2020. It succeeded in providing a means of worship without physically being in the Sanctuary on Sunday. How else under those unfortunate circumstances could we stay connected to God and to each other as a church family?

We are now two years into not only recording video, but we are livestreaming every Sunday's worship service as well.

Since March 22, 2020, there have been more than 120 videos of worship and other church-related

services. As of this writing, those videos have been viewed more than 10,500 times.

While the numbers are impressive, this isn't about popularity or crowing about number of views. The opportunity that emerged out of the pandemic crisis represents a new and significantly important outreach medium which may not have ever come to fruition had it not been for the full embrace of support that was given by our Little Chapel Pastor and Music Director.

We all know that the pandemic isn't over, but we do know that it has turned us and our world upside down. How we deal with that defines us.

The return to normal will not occur. We will pick up where we left off, but in a new environment that has changed us and the way we go about our daily lives and the way and where we worship.

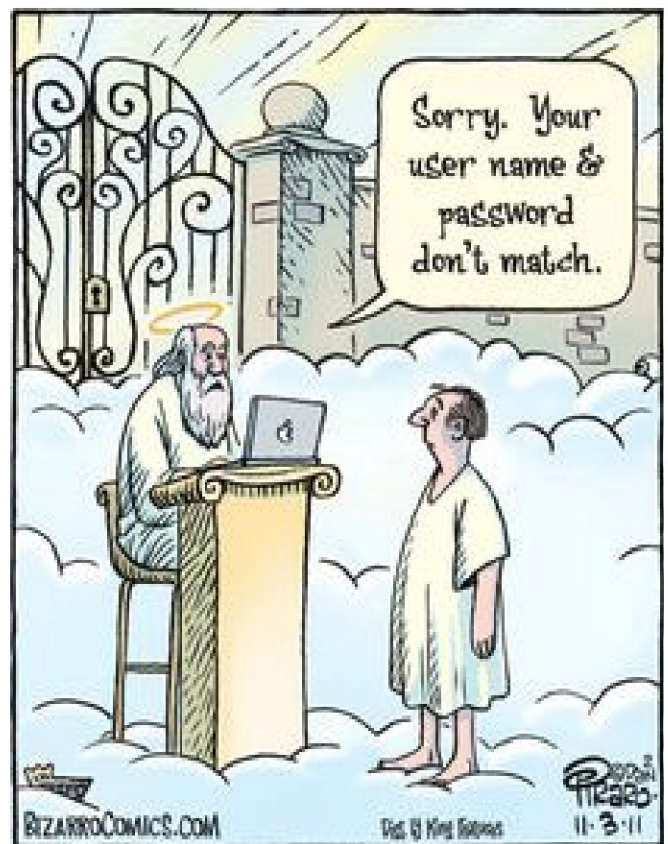
At Little Chapel, we've come to worship God not only in our sanctuary, but on the beach and in our parking lot. We've participated in worship listening on the radio while we sat in our cars. We have learned to be flexible and resilient. We've learned that wherever we are, God is there too.

Livestreamed and recorded video is provided to anyone who elects to worship God regardless of their location or day or time. Who knew on March 22, 2020 that this would be the outcome?

Advancements and improvement in technology have allowed us to provide video and livestream outreach which otherwise would not be possible. Those unable to attend worship in person have the ability to hear God's message through computers, phones, tablets, or televisions.

We've come a long way the last 2 years living under the darkest clouds of the pandemic crisis, but we capitalized on the opportunities which have emerged; and with focused minds, solved the problems at hand.

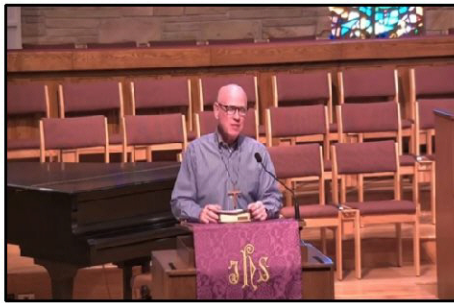
The future will continue to present us with challenges and crises, along with endless possibilities and opportunities. We must question and challenge 'this is how we've always done it' thinking as we continue our ministries and missions worshipping God and serving others – those who live across the street and those around the world.





- 1 Lynn McIver
- 2 Kate Schild
- 3 Lori Holcomb
- 4 Deborah Bullard
- 4 David Long
- 4 William Ruoff
- 5 Marie Ahearn
- 6 Amanda Gotthardt
- 6 Don Smith
- 6 Barbara Williams
- 9 Tricia Ennis
- 10 Marie Godsell
- 12 Pat Rabun
- 12 Matthew Sawyer
- 13 Daniel Reddick
- 17 Adeline Hines
- 18 John Copeland
- 18 Pat Roche
- 19 Heide Hooper
- 23 Wendy Foster
- 26 Brendan MacDaniel
- 27 Terri Barker
- 27 Robert Gotthardt
- 28 Brett Blizzard
- 28 Pat Hatcher
- 29 Freddye Ledford

Take a Cross.
Wear the Cross or Carry
the Cross for the next 40 days.
Find courage to share the story
of the Cross you carry.



THANK YOU!!



Jerrold Lowry is the General Presbyter and Stated Clerk of the Presbytery of Coastal Carolina



There are no words to adequately express how grateful we are for all of the cards, calls, prayers, and gifts received during this difficult time. You are a gift, and we thank God for you.

Bless you!
The Lowry Family

Shutterfly
www.shutterfly.com

Dear Delores & the
good people of Little
Chapel on the Boardwalk.
Thank you so much
for letting us use the
fellowship hall for
Peggy's birthday!!
We appreciate you all!!
Sincerely
Greg & Susan Denton
3/21/22

in
Loving
Memory

MAGGIE NORTH

Mr. & Mrs. Robert Andrew

Mr. & Mrs. Brian McIntyre

Mr. & Mrs. Thomas Jones

TOMMY BANCROFT

Mr. & Mrs. Bo Wessell

Mr. & Mrs. Brian McIntyre

Mr. & Mrs. James Rivenbark

PETE & SYBEL BOOTH

Mr. & Mrs. Chancey Hill

Ms. Patricia Hardison

Mr. & Mrs. Dean Cobble

Betty Jo & Susan Stevens

JIM LEGG

Mr. & Mrs. David Matthews

Mr. & Mrs. Gary Gischel

Mr. & Mrs. CECIL ROBINSON

Mr. W. Lawrence Bass





Easter Sunday, Apr 17th, Ms Mimi (Cathy) and Christine will host an Easter egg hunt for our congregation's children during Children's Sunday school.

Unlike in the past where we have opened it to the entire community, we are keeping it small with just our congregation and friends.

Anyone with children or grandchildren Toddler age - 2nd grade is welcome to join us on this special day. We will have some youth volunteering for added safety.

The children will go to 10:00 (Note different worship time!) as they normally do, and once Pastor Earl concludes the children's portion of service (10:15am) we will take the children to hunt for eggs that will be hidden on the Matthew house property. Then we will return to the Sunday school room have a mini celebration and await pick up at 11:00am.

Anyone wanting to donate toward candy and refreshments for the children, may do so monetarily by labeling the envelope Christian Ed Easter Donation.

Christine Kennedy, Christine.wpfa@gmail.com



SAVE THESE DATES!

June 20 - June 24 from 9:00am - 12:00pm.

Our theme will be Noah's Ark!

CE will be meeting this month to get more details together and those who showed interest in volunteering with CE at the Time and Talent Fair will be hearing from us!

So, save the date - spread the word - VBS is almost here!!!

Questions: Christine Kennedy or Sarah McLaughlin, sarahmclaughlin98@gmail.com



Children's Moment



Pastor John has their attention!



Just for fun!



Find the books of the Bible in this word puzzle

This is a most remarkable puzzle. It was found by a gentleman in an airplane seat pocket on a flight from Los Angeles to Honolulu, keeping him occupied for hours. He enjoyed it so much, he passed it on to some friends. One friend from Illinois worked on this while fishing from his john boat. Another friend studied it while playing his banjo. Elaine Taylor, a columnist friend, was so intrigued by it, she mentioned it in her weekly newspaper column. Another friend judges the job of solving this puzzle so stressful, she brews a cup of tea to help her nerves. There will be some names that are really easy to spot. That's a fact. Some people, however, will soon find themselves in a jam, especially since the book names are not necessarily capitalized. Truthfully, from answers we get, we are forced to admit it usually takes a minister or scholar to see some of them at the worst. Research has shown that something in our genes is responsible for the difficulty we have in seeing the books in this paragraph. During a recent fund-raising event, which featured this puzzle, the Alpha Delta Phi Lemona de Booth set a new record. The local paper, The Chronicle, surveyed over 200 patrons who reported that this puzzle was one of the most difficult they had ever seen. As Daniel Humana humbly puts it, "The books are right here in plain view hidden from sight." Those able to find all of them will hear great lamentations from those who have to be shown. One revelation that may help is that books like Timothy and Samuel may occur without their numbers. Also, keep in mind, that punctuation and spaces in the middle are normal. A chipper attitude will help you compete really well against those who claim to know the answers. Remember, there is no need for a mad exodus; there really are 30 books of the Bible lurking somewhere in this paragraph waiting to be found. God Bless!

Amos, Mark, Luke, John, Joel, Judges, Job, Hebrews, Esther, Acts, James, Ruth, Romans, Titus, Matthew, Genesis, Philemon, Chronicles, Daniel, Nahum, Hosea, Lamentations, Revelation, Timothy, Samuel, Numbers, Malachi, Peter, Exodus, Kings.

Contact Jane Hughes for answers, jhughes23@ec.rr.com.

Thank you, Judy Gibson, for sharing this!

Easter Word Search

Alive
Believe
Betrayed
Bread
Cross
Crucify
Died
Donkey
Empty
Forgiven
Gethsemane
Guards
Hosanna



Life
Nails
Palms
Pilate
Prayed
Risen
Rooster
Sacrifice
Sin
Son
Stone
Thorns
Tomb



T	H	O	R	N	S	W	Y	S	M	L	A	P	N	G
K	R	I	S	E	N	Y	C	E	N	O	T	S	E	C
R	E	T	S	O	O	R	D	R	K	H	O	T	V	R
B	E	L	I	E	V	E	S	E	O	N	H	B	I	U
Y	T	P	M	E	Z	D	X	S	Y	S	O	C	G	C
E	C	I	F	I	R	C	A	S	E	A	S	D	R	I
E	V	I	L	A	L	N	B	M	O	T	R	B	O	F
S	I	N	U	I	N	N	A	I	L	S	C	T	F	Y
W	V	G	F	A	E	N	P	I	L	A	T	E	E	S
B	R	E	A	D	E	Y	A	R	P	D	I	E	D	B

Contact Jane Hughes for answers.



Four new members were warmly welcomed into the Little Chapel on the Boardwalk Family Sunday, March 27th.

Duncan McIver – Retired from Lowe's Home Improvement and works for Novant Health. He enjoys the beach, gardening, being with family, and singing in the LCoB choir.

Trudy Morehead – Retired school teacher who currently works at Huntington Learning Center. She enjoys walking, reading, and singing in the LCoB choir.

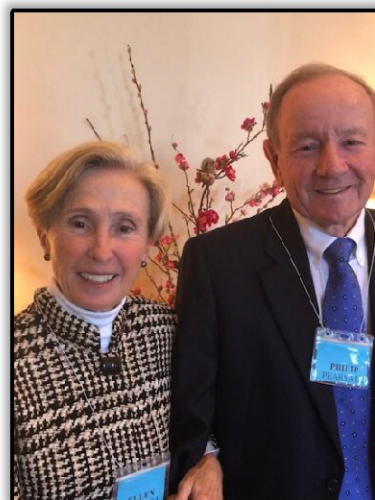
Ellen and Phil Pearsall – Ellen is a retired restaurant owner who enjoys playing tennis and bridge. She enjoys reading and dabbling in politics. Phil is retired from property and casualty insurance and enjoys golf, bridge, and reading.

Welcome to Little Chapel on the Boardwalk!!!



**Duncan
McIver**

**Trudy
Morehead**



**Ellen and Phil
Pearsall**





Help us grow our church family!

Spread the good news of the wonderful ministry we have going on at Little Chapel!

There are three ways to join:

1. Confession of faith in Jesus Christ as Lord and Savior, having never joined a church before;
2. Reaffirmation of faith, having previously joined another church but having no current membership to transfer;
3. Letter of transfer from another church.

If you know if anyone who would like to know more about us, contact Dr. John Earl, pastor@littlechapel.com, or any of the Ruling Elders (see last page). The upcoming summer beach service is a great way to give us a try!



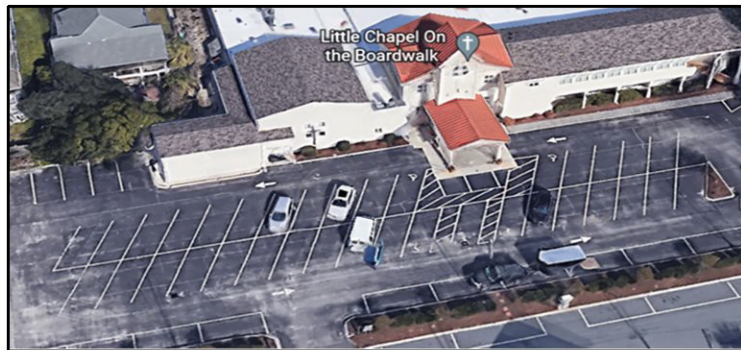
Committee Request

Your membership Committee is working to bring our church rolls up to date. In doing so we have found that the contact information we have is not always correct. If you have had a change of address or telephone number, please let the church office know by calling **910-256-2819** or emailing Delores (delores@littlechapel.org). We would like to stay in touch and the only way to do this is for the contact information to be correct.

There are several families in which the children are still listed under the family contact information even though they are of the age that

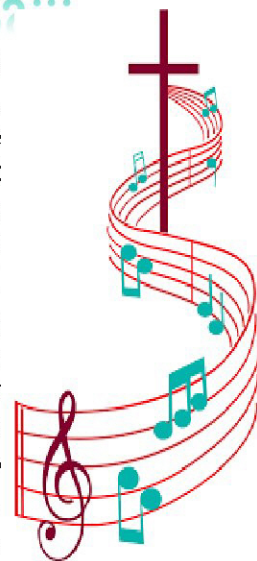
Little Chapel Parking Lot

As summer approaches, please remember that other than church services including committee meetings, and other church related matters, the parking lot is available to members and approved guest at no charge as long as your car has a Little Chapel sticker or if a special arrangement has been made with the church office. Please contact Delores Dyer, Delores@littlechapel.org with any questions.



Calling All Voices!!!

Would you like to experience FREE musical therapy with lots of laughter, music, and fellowship? **Join the Little Chapel Adult Choir.** Can't read music...No Problem! Have you not sung in a while...No Problem! Did you play a musical instrument, but haven't sung before...No Problem! We need you and you need us! Come join our fun! We rehearse about **45 minutes** prior to the 10:30am worship service **Sunday mornings.** Contact David Heinzman, david@littlechapel.org.



they have their own address and phone number and possibly a name change. It is important to make the church aware of these.

Both your Congregational Care and Membership Committees want to be faithful to our Christ as we seek to reach out to the larger membership. By informing us of changes within your lives you enable us to do so. For this we are thankful.

Janice Allen, Membership Committee Moderator

UPDATE DATA

Sanctuary Flowers



From: Worship Committee/Flower Subcommittee

We continue to enjoy the pretty flowers each Sunday in the Sanctuary. We have plenty of Sundays throughout 2022 available. **The cost is \$60.00 per vase.** The flowers may be used for memorials, anniversaries, birthdays, or any special occasion or recognition you choose.

You are invited to select any Sunday, but please be aware that there are a few 'special' circumstances through the year that pre-determine which arrangements are used. On Palm Sunday, palms are used, on Easter Sunday, Easter lilies are used, and on Sundays during Advent, seasonal greens are used. On these special Sundays **two vases are required**.

If you select the first Sunday of a month/Communion Sunday, two vases are required for the communion table.

The 2022 Sundays are listed on the Flower Calendar in the narthex. To submit your request for flowers, please follow the process outlined below.

1. Sign-up on the flower calendar in the narthex. Please print your name in the appropriate date you wish to have your flowers placed in the sanctuary and when applicable indicate one or two vases.
2. The church office will post an acknowledgement dedication in the bulletin for any and all vases purchased. Please complete the below form with your requests and **submit your check marked "Flower Fund"** to the church office or place it in the offering plate. There are also forms in the narthex next to the Flower Sign-up sheet. As in the past, we honor these requests in the order they are received, so please give this your prompt attention.
3. Please note that you **MUST submit a completed flower form and PAYMENT to the church office at the time that you sign-up to give flowers.**

Unless you request otherwise, the Worship Committee will deliver the flowers to the shut-ins as well as to the skilled nursing facilities and hospital.

Thank you for your support of this program. As you can tell, not only are the flowers used to beautify our sanctuary on Sunday mornings, they are also enjoyed throughout the week by our members who cannot be with us for worship.

Date: _____ Number of Vases (1 or 2): _____ Amount Enclosed: _____

Your Name: _____ Your Address: _____

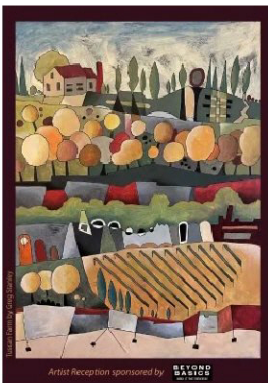
Your Email address: _____ Your Cell #: _____

For the Bulletin: In Memory of: _____ In Honor of: _____

Disposition (check one):

I would like to have the flowers: _____ Deliver to ill/bereaved/nursing home: _____

Choice of Dates: First: _____ Second: _____ Third: _____ No Preference: _____



ART Show and Sale

40th Annual Juried Spring Show & Sale

Sponsored by Wilmington Art Association

Show Dates: April 2 – April 10, 2022

www.wilmington-art.org

Hannah Block Historic USO/Community Arts Center
120 S. Second St, Wilmington, NC 28401

April 2nd – 9th: 10am – 5pm

Sunday April 10th: 10am – 4pm



Presbyterian Church (USA)
2 W. Fayetteville Street
Wrightsville Beach, NC 28480
Church Office: 910.256-2819
www.littlechapel.org

Sanctuary Worship Services
8:30 am and 10:30 am
April 17th 10:00am only

STAFF

Dr. John Earl
Pastor
pastor@littlechapel.org

Delores Dyer
Office Administrator
delores@littlechapel.org

David Lee Heinzman
Director of Music Ministry
david@littlechapel.org

Joan Denney
Bookkeeper
jdenney@littlechapel.org

Daniel B. Holt
Custodian
danielbholt@aol.com

Cathy Slany
Nursery Attendant

A-V TECHNICIANS

Hugh Armstrong
Andy Marhevsky
Robert McIver
Gary Kohunsky



SESSION

CLERK of SESSION
Mary Jo Kohunsky
mkohunsky@yahoo.com

CHRISTIAN EDUCATION
Christine Kennedy
christine.wpfa@gmail.com
Sarah McLaughlin
sarahmclaughlin98@gmail.com

FINANCE
John Copeland
wjohncopeland@yahoo.com
Dickson Bridger
Dbridger09@aol.com

MISSION
Beckey Smith
rbayard60@gmail.com
Marti Shogi
mdshogi@gmail.com

PERSONNEL & PLANNING

Ed O'Neil
edoneil60@gmail.com
Lisa Jordan
ljcshell@yahoo.com

PROPERTY
Barry Lindholm
luckybll@aol.com
Hank Metzger
hsailor@twc.com

WORSHIP
Sherri Alexander
sherri2916@outlook.com
Terry Paterson
thpat1960@gmail.com

DIACONATE

COMMUNICATIONS
Robert McIver
Rsmciver@gmail.com
Jane Hughes
Jhughes23@ec.rr.com

CONGREGATIONAL LIFE

Joan Page
jpage25@bellsouth.net
Rebecca Beachy
rmbeachy@aol.com

FELLOWSHIP
Brenda Parker
parkerb@uncw.edu
Phyllis Warren
ppwarren3@aol.com

MEMBERSHIP
Janice Allen
janiceallen@ec.rr.com

STEWARDSHIP
Chris McKirachan
motzsews@aol.com
Bryan McIntyre
bfmccintyre@att.net



Livestream & recorded video of indoor services are on Little Chapel on the Boardwalk's YouTube channel